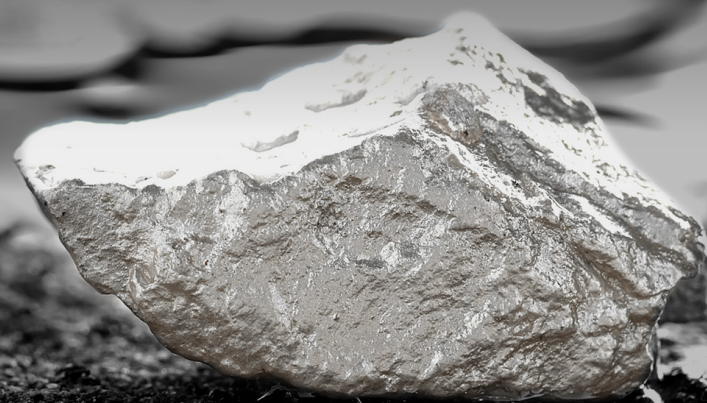




UNRIVALED POTENTIAL FOR DISCOVERY IN PERU

TSXV : TSLV OTCQB : TSLVF



PURSUING WORLD-CLASS SILVER, GOLD AND COPPER DISCOVERIES IN PERU

Exploring early-stage projects in Peru with untapped Pacific Ocean potential. Tier One Silver's primary focus is on its Curibaya project, where it is actively targeting high-grade silver, gold and copper mineralization.

WHY PERU?

- ✓ 3rd largest producer of **silver**
- ✓ Largest reserves of **silver** in the world
- ✓ 6th largest producer of **gold**
- ✓ 2nd largest **copper** producer



CAPITAL STRUCTURE

(as of September 10, 2024)

| SHARE ISSUED | OPTIONS (avg. price \$0.71) | MARKET CAP |
|--------------------|--------------------------------|----------------|
| 171,049,523 | 9,895,000 | ~C\$19M |

WARRANTS OUTSTANDING

(\$0.35 Exp. Apr 21, 2025, \$0.25 Exp. Apr 24, 2025, \$0.25 Exp. Apr 30, 2025, \$0.75 Exp. May 31, 2025, \$0.25 Exp. Dec 8, 2025, \$0.25 Exp. Dec 15, 2025)

45,551,397

FULLY DILUTED SHARES OUTSTANDING

226,495,920

TOTAL # OF SHAREHOLDERS: **~14,000**

PROPERTIES

High quality exploration in Peru, on a world-class porphyry belt

TECHNICAL ABILITY

Multi-disciplinary technical team with deep mining experience

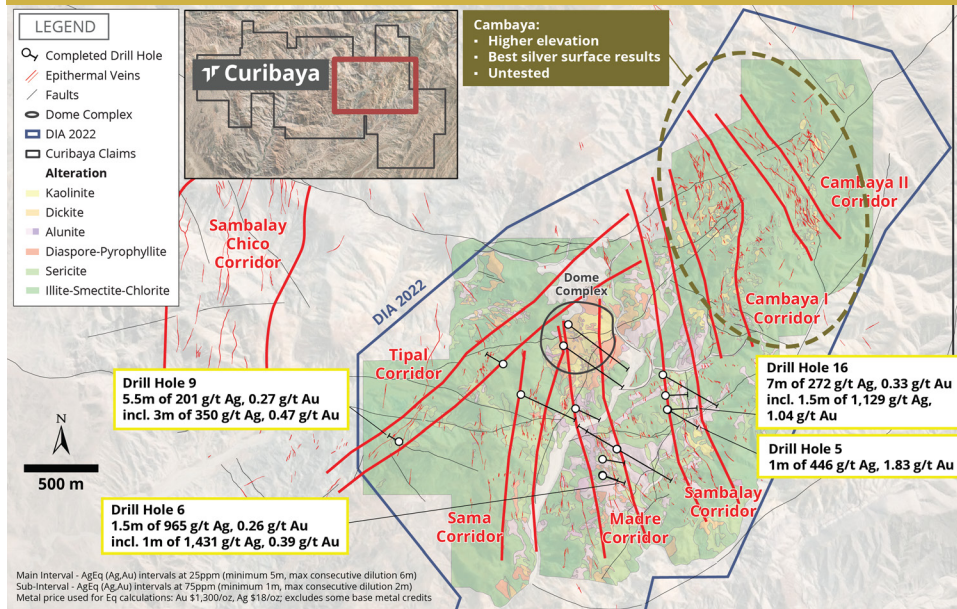
TEAM

Leadership with a track record of monetizing discovery success

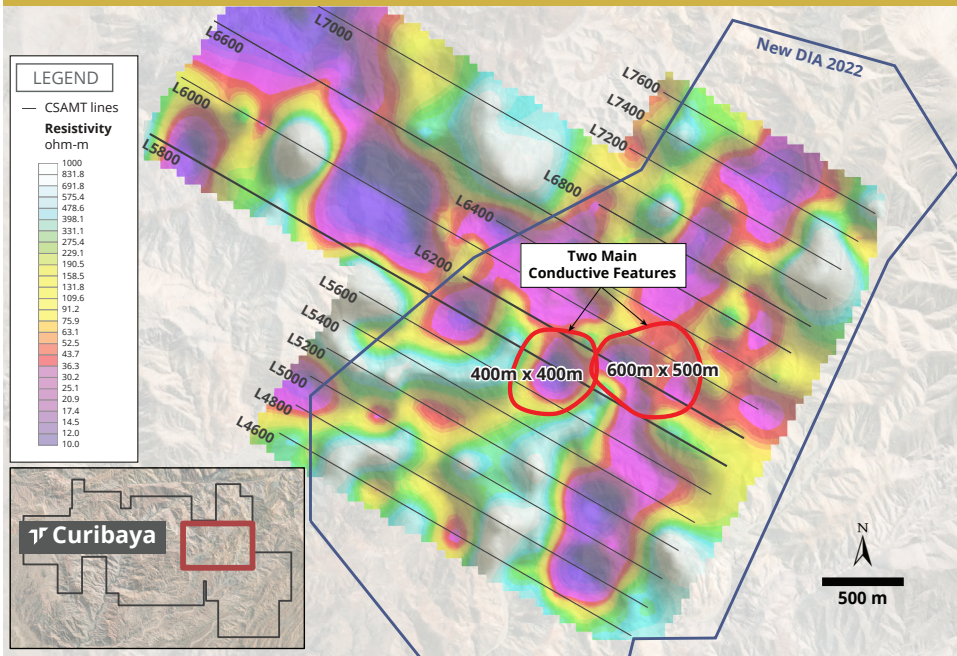
CURIBAYA OVERVIEW

- Located on a world-class porphyry belt, directly surrounded by some of the largest discoveries in the world including: Cerro Verde (Freeport), Toquepala (Southern Copper), Quellaveco (Anglo American), Cuajone (Southern Copper)
- Inaugural drill program returned multiple high-grade intercepts, including: 1.5m of **1,129 g/t Ag, 1.04 g/t Au** within a larger interval of 7m of **272 g/t Ag, 0.33 g/t Au** and 1m of **1,431 g/t Ag, 0.39 g/t Au** within a larger interval of 1.5m of **965 g/t Ag, 0.26 g/t Au**
- Extensive high-grade rock samples: Up to **298,590 g/t gold** and **934 g/t silver** sampled
- Exploration focus is on high-grade silver mineralization as well as potential underlying porphyry copper system

2021 DRILL PROGRAM, CURIBAYA



CURIBAYA - PORPHYRY COPPER TARGETS



MANAGEMENT



PETER DEMBICKI
President, CEO & Director



IVAN BEBEK
Co-Founder/Chair



CHRISTIAN RIOS P. Geo.
Senior VP of Exploration



STACY ROWA CPA, CA
Chief Financial Officer

DIRECTORS

Ivan Bebek
Peter Dembicki
Jeffrey Mason CPA, ICD.D

Antonio Arribas PhD (Geology)
Paul Sun CFA, P. Eng.
Christy Strashek CFA

INVESTOR CONTACT

Suite 250 - #1300
997 Seymour St.
Vancouver, BC, Canada V6B 3M1
Tel: 778-729-0700
Email: info@tieronesilver.com

Disclaimer

This document has been prepared by Tier One Silver (the "Company") to introduce the Company's mineral exploration projects. Because it is a high-level summary presentation, the information contained herein cannot contain all the information that should be reviewed before making an investment decision.

Forward looking statements are inherently uncertain
Canadian mineral disclosure differs from U.S. mineral disclosure
See full disclosure records for Tier One Silver at www.sedar.com.

Christian Rios (Senior VP of Exploration), is the Qualified Person who assumes responsibility for the technical contents of this document.